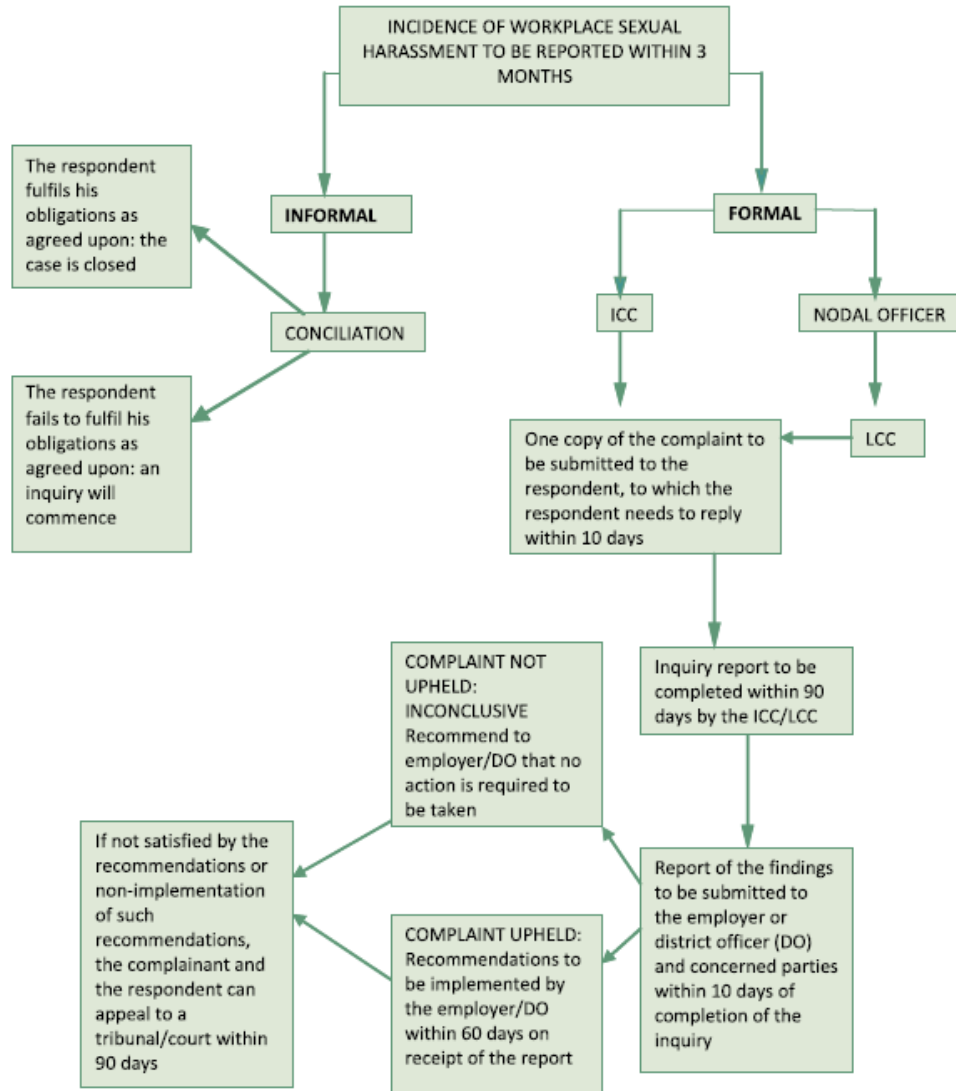


Procedure to file/report a complaint:

The complainant will have to submit a written and signed complaint addressed to the Women Cell. Any woman employee academic/ non-academic (including contractual, casual and temporary) and female student of NIT Uttarakhand can approach the Cell.

[Contact Email ID: womencell_icc@nituk.ac.in](mailto:womencell_icc@nituk.ac.in)

INQUIRY PROCEDURE AT A GLANCE



Source: (Handbook on Sexual Harassment of Women at Workplace, Ministry of Women and Child Development, Government of India)

Other Downloads

[Handbook on Sexual Harassment of Women at Workplace](#)

[Sexual Harassment of Women at Workplace \(Prevention, Prohibition and Redressal\) Act, 2013](#)

[Previous activities by ICC\(Women Cell\)](#)